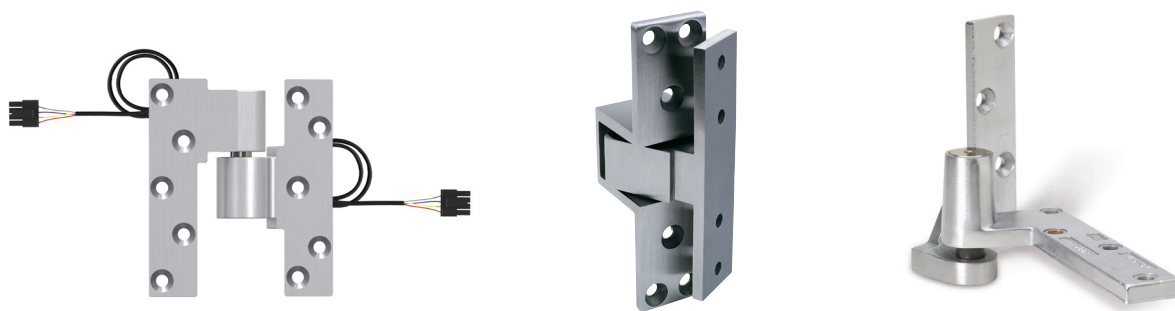


Hinges and pivots

Pivots

Pivots

Pivots reduce stress on the frame by distributing the door weight throughout the floor and structure. By taking advantage of the structure strength, this makes a pivot the ideal solution for heavy doors. Center and pocket pivots also provide an aesthetic option for an opening. Ives offers a complete line of $\frac{3}{4}$ " offset, $1\frac{1}{2}$ " offset, center hung, intermediate, pocket and power transfer pivots with all exposed parts made of brass or stainless steel for maximum corrosion resistance. The offerings include high strength brass and stainless-steel forgings, as well as castings for fire-rated and non-rated doors, combined with precision bearings for smooth operation. The positive locking vertical adjustment mechanism allows the installer to precisely position the door and balance the load.



Hinges and pivots

Pivots

General information

UL Listed

- Ives non-rated brass Pivots are tested and approved UL 10C (20 min) as noted on model
- Ives rated stainless steel Pivots are tested and approved UL 10C (3 hrs) as noted on model

Material

High strength brass and 304 series stainless steel forgings, and castings for rated and non-rated doors combined with radial and needle precision bearings for smooth operation. See specific models for more information.

Pivot duty

Last digit in pivot set number reflects the maximum door weight in hundreds of pound, e.g., 7215 = 500 pounds. For sets designated as "heavy duty", add 1,000 pounds, e.g., 7237F HD set = 1700 pounds.

See table on the following page for selecting the proper pivot for the application.

Add additional Intermediate Pivots for each 100 pounds of door weight and/or for doors exceeding 7' in height. Intermediate pivots should be placed every 2'6" as needed.

Mounting hardware

Stainless steel machine screws and wood screws standard for all metal door and frames and metal frame/wood door applications. Positive locking vertical adjustment mechanism allows the installer to precisely position the door and balance the load.

Electrification options

Electrified pivots are non-load bearing. Provides electric power transfer from the frame to the door in order to supply power to an electrified mortise or cylindrical locks, exit devices with electric latch retraction, and/or electric strikes (pairs of doors). Each wire is 28 AWG and rated 50 volts AC/DC at 3.5 amp continuous and 16 amp pulse. Maximum pulse 400 milliseconds.

Finishes

BHMA	Description	Substrate	Finish
600	Primer Paint	Stainless steel	USP
605	Bright Brass	Brass	US3
606	Satin Brass	Brass	US4
612	Satin Bronze	Brass	US10
613	Oil Rubbed Bronze	Brass	US10B
619	Satin Nickel	Brass	US15
622	Matte Black	Brass	BLK
625	Bright Chrome	Brass	US26
626	Satin Chrome	Brass	US26D
629	Bright Stainless	Stainless steel	US32*
630	Satin Brass	Stainless steel	US32D*
631	Matte Black	Stainless steel	BLK
632 ¹	Satin Brass	Steel	US3
639 ¹	Satin Bronze	Steel	US10
640 ²	Oil Rubbed Bronze	Steel	US10B
646 ²	Satin Nickel	Steel	US15
643e/716	Aged Bronze	Brass/stainless	643e/716
689	Aluminum Painted	Brass/stainless	SP28
691	Bronze Painted	Brass/stainless	SP10
695	Dark Bronze Painted	Brass/stainless	SP313/US10BE
706	Brass Painted	Brass/stainless	SP4

1. Available on F fire-rated pivots and pocket pivots only.

2. Available on pocket pivots only.

For other colors, consult product support.

The Ives Power Transfer Intermediate (PT INT) pivots and Electrified Pocket Pivot (E) are available in 4 wire (TW4) or 8 wire (TW8). Supplied standard with Allegion Connect 4 or 8-pin Connector (CON) which makes it easy to connect to other electrical consumption devices.

Pivot selection chart

7200 series

Pivot set	Pivot type	Bottom style mounting	UL listing	Max door weight	Handing	When ordering separate pivot applications, the following descriptions will be used for the pivot		
						Top	Bottom	Intermediate
7212	3/4" Offset	Jamb mounted	20 Minute	200	LH or RH	7212-7215-7222-7226-7227 TOP	7212 BTM	7212-7212V-7222 INT
7212V	3/4" Offset	Jamb mounted	20 Minute	200	LH or RH	7212V TOP	7212 BTM	7212-7212V-7222 INT
7215	3/4" Offset	Jamb mounted	20 Minute	500	LH or RH	7212-7215-7222-7226-7227 TOP	7215 BTM	7215-7226-7227 INT
7215F	3/4" Offset	Jamb mounted	3 Hour	500	LH or RH	7215F-7226F-7227F TOP	7215F BTM	7215F-7226F-7227F INT
7222	3/4" Offset	Floor mounted	20 Minute	200	LH or RH	7212-7215-7222-7226-7227 TOP	7222 BTM	7212-7212V-7222 INT
7226	3/4" Offset	Floor mounted	20 Minute	600	Non-handed	7212-7215-7222-7226-7227 TOP	7226 BTM	7215-7226-7227 INT
7226F	3/4" Offset	Floor mounted	3 Hour	600	Non-handed	7215F-7226F-7227F TOP	7226F BTM	7215F-7226F-7227F INT
7227	3/4" Offset	Mortise cement case	20 Minute	700	Non-handed	7212-7215-7222-7226-7227 TOP	7227 BTM	7215-7226-7227 INT
7227F	3/4" Offset	Mortise cement case	3 Hour	700	Non-handed	7215F-7226F-7227F TOP	7227F BTM	7215-7226-7227 INT
7230F	3/4" Offset	Floor mounted	3 Hour	1,000	Non-handed	7230F-7237F TOP	7230F BTM	7215F-7226F-7227F INT
7237F	3/4" Offset	Mortise cement case	3 Hour	1,750	Non-handed	7230F-7237F TOP	7237F BTM	7230F-7237F INT
7244F	1 1/2" Offset	Floor mounted	3 Hour	400	Non-handed	7244F-7245F TOP	7244F BTM	7230F-7237F INT
7245F	1 1/2" Offset	Mortise cement case	3 Hour	500	Non-handed	7244F-7245F TOP	7245F BTM	7244F-7245F INT
7253	Center hung	Floor mounted	-	300	Non-handed	7253-7255-7255J-7256 TOP	7253 BTM	7244F-7245F INT
7255	Center hung	Floor mounted	-	500	Non-handed	7253-7255-7255J-7256 TOP	7255 BTM	-
7255J	Center hung	Jamb mounted	-	500	Non-handed	7253-7255-7255J-7256 TOP	7255J BTM	-
7256	Center hung	Mortise cement case	-	600	Non-handed	7253-7255-7255J-7256 TOP	7256 BTM	-
7259	Center hung	Mortise cement case	-	1,000	Non-handed	7259 TOP	7259 BTM	-

Introduction

Table of contents

Hinges and pivots

Pulls, push bars and plates

Flush bolts, strikes and coordinators

Latches, catches and bolts

Door stops, holders and silencers

Exterior hardware

Miscellaneous hardware

Hinges and pivots

Pivots

How to order

Model	Style	Handing	Finish
1	2	3	4
7212	-	LH	US3

Detail

1 Model

7212	7226	7237F	7255J
7212V	7226F	7244F	7256
7215	7227	7245F	7259
7215F	7227F	7253	91105F
7222	7230F	7255	E91105F

2 Style

SET	Top and bottom set
TOP	Top pivot only
BTM	Bottom pivot only
INT	Intermediate pivot only
PT INT	Power transfer intermediate pivot only

3 Handing

LH	Left hand door
RH	Right hand door

Required on 7212, 7212V, 7222, all INT, and all PT INT.

3 Finish

BHMA	Description	Finish	Availability
600	Primer Paint	USP	See specific models
605	Bright Brass	US3	See specific models
606	Satin Brass	US4	See specific models
612/639	Satin Bronze	US10	See specific models
613	Oil Rubbed Bronze	US10B	See specific models
619	Satin Nickel	US15	See specific models
622/631	Matte Black	BLK	See specific models
625	Bright Chrome	US26	See specific models
626	Satin Chrome	US26D	See specific models
629	Bright Stainless	US32	See specific models
630	Satin Brass	US32D	See specific models
643e/716	Aged Bronze	643e/716	See specific models
689	Aluminum Painted	SP28	See specific models
691	Bronze Painted	SP10	See specific models
695	Dark Bronze Painted	SP313/US10BE	See specific models
706	Brass Painted	SP4	See specific models

Note: Please view specific models for info on availability

Hinges and pivots

Offset pivots

7212

3/4" Offset pivot, 200lb with top header mount

- Maximum door load 200 pounds
- Recommended for use with 1 3/4" minimum door thickness, with 1/8" bevel in 2"
- Vertical adjustment range 3/16", with positive locking
- Handed LH or RH
- 7212 Set (7212 Top and 7212 Btm)
- 7212 Top (7212-7215-7222-7226-7227 Top), header mount
- 7212 Btm (7212 Btm), jamb mount

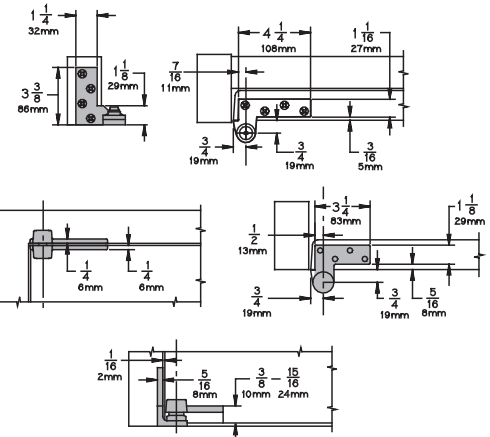
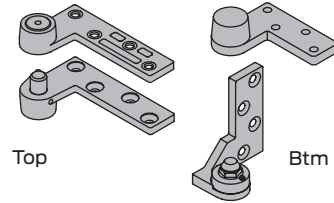
Specifications

Material substrate	Made from cast brass
Certifications	<ul style="list-style-type: none"> Meets ANSI/BHMA A156.4 C07131 UL 10C Listed (20 min)

Available accessories

7212 INT (7212-7212V-7222) Intermediate pivot (handed) as needed

See general information for specifics on how many intermediate pivots are recommended.



7212V

3/4" Offset pivot, 200lb with top jamb mount

- Maximum door load 200 pounds
- Recommended for use with 1 3/4" min. door thickness, with 1/8" bevel in 2"
- Vertical adjustment range 3/16", with positive locking
- Handed LH or RH
- 7212V Set (7212V Top and 7212 Btm)
- 7212V Top (7212V), jamb mount
- 7212 Btm (7212 Btm), jamb mount

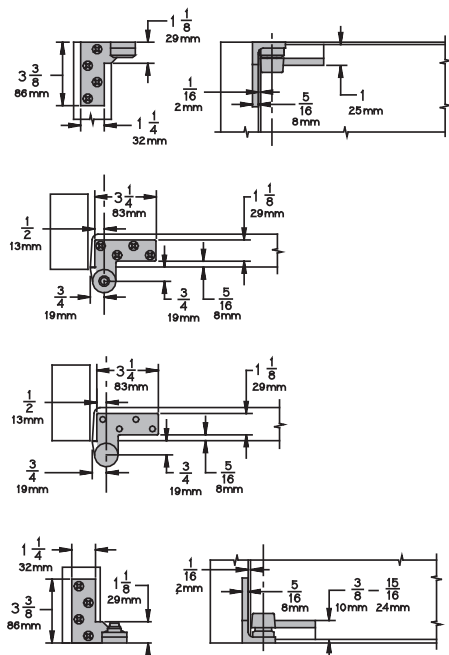
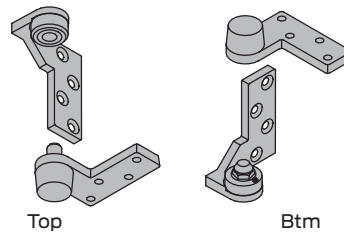
Specifications

Material substrate	Made from cast brass
Certifications	<ul style="list-style-type: none"> Meets ANSI/BHMA A156.4 C07131 UL 10C Listed (20 min)

Available accessories

7212 INT (7212-7212V-7222) Intermediate pivot (handed) as needed

See general information for specifics on how many intermediate pivots are recommended.



7212 and 7212V finishes

BHMA	Description	Substrate	Finish
605	Bright Brass	Brass	US3
606	Satin Brass	Brass	US4
612	Satin Bronze	Brass	US10
613	Oil Rubbed Bronze	Brass	US10B
619	Satin Nickel	Brass	US15
622	Matte Black	Brass	BLK
625	Bright Chrome	Brass	625
626	Satin Chrome	Brass	626
-	Aged Bronze	Brass	643e/716
689	Aluminum Painted	Brass	SP28
691	Bronze Painted	Brass	SP10
695	Dark Bronze Painted	Brass	SP313/US10BE
706	Brass Painted	Brass	SP4

For other colors, consult factory.

Introduction
Table of contents
Hinges and pivots
Pulls, push bars and plates
Flush bolts, strikes and coordinators
Latches, catches and bolts
Door stops, holders and silencers
Exterior hardware
Miscellaneous hardware

Hinges and pivots

Offset pivots

7215 / 7215F

3/4" Offset pivot, 500lb with top header mount (fire and non-fire rated models)

- Maximum door load 500 pounds
- Recommended for use with 1 3/4" minimum door thickness, with 1/8" bevel in 2"
- Vertical adjustment range 3/16", with positive locking
- Handed LH or RH
- 7215 Set (7215 Top and 7215 Btm)
- 7215 Top (7212-7215-7222-7226-7227 Top), header mount
- 7215 Btm (7215 Btm), jamb mount
- 7215F Set (7215F Top and 7215F Btm), fire rated
- 7215F Top (7215F-7226F-7227F Top), header mount, fire rated
- 7215F Btm (7215F Btm), jamb mount, fire rated
- Optional WP resistant bottom pivot is modified for improved corrosion resistance [available in US26D (626) or US32D (630) only]

Specifications

Material substrate	<ul style="list-style-type: none"> ▪ 7215 - Made from cast brass ▪ 7215F - Made from 304 series stainless steel
Certifications	<ul style="list-style-type: none"> ▪ Meets ANSI/BHMA A156.4 C07131 ▪ 7215 - UL 10C Listed (20 min) ▪ 7215F - UL 10C Listed (3 hour)

Available accessories

7215 INT	(7215-7226-7227) Intermediate pivot (handed) as needed
7215F INT	(7215F-7226F-7227F) Intermediate pivot (handed) as needed
7215PT INT or 7215FPT INT	(7215-7226-7227 PT INT) or (7215F-7226F-7227F PT INT) power transfer intermediate pivot (handed) for electrical applications; for additional wiring applications, consult product support

See general information for specifics on how many intermediate pivots are recommended.

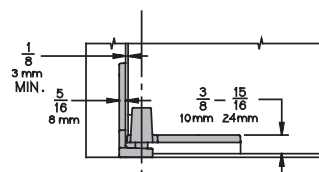
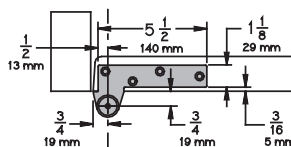
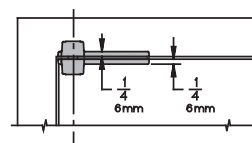
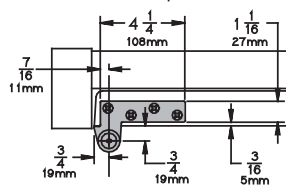
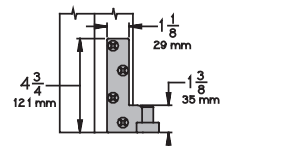
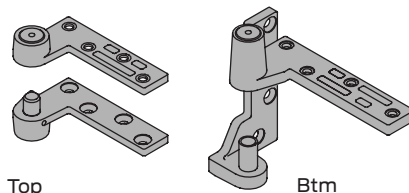
7215 Finishes

BHMA	Description	Substrate	Finish
605	Bright brass	Brass	US3
606	Satin brass	Brass	US4
612	Satin bronze	Brass	US10
613	Oil rubbed bronze	Brass	US10B
619	Satin nickel	Brass	US15
622	Matte black	Brass	BLK
625	Bright chrome	Brass	625
626	Satin chrome	Brass	626
-	Aged bronze	Brass	643e/716
689	Aluminum painted	Brass	SP28
691	Bronze painted	Brass	SP10
695	Dark bronze painted	Brass	SP313/US10BE
706	Brass painted	Brass	SP4

7215F Finishes

BHMA	Description	Substrate	Finish
629	Bright stainless	Stainless steel	US32
630	Satin stainless	Stainless steel	US32D
631	Matte black	Stainless steel	BLK
632	Bright brass	Stainless steel	US3
639	Satin bronze	Stainless steel	US10
-	Aged bronze	Stainless steel	643e/716
689	Aluminum painted	Stainless steel	SP28
691	Bronze painted	Stainless steel	SP10
695	Dark bronze painted	Stainless steel	SP313/US10BE
706	Brass painted	Stainless steel	SP4

For other colors, consult factory.



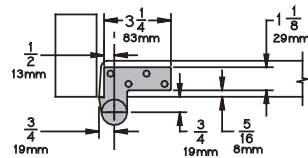
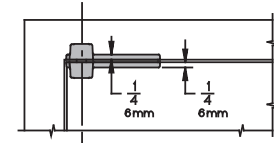
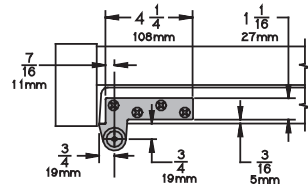
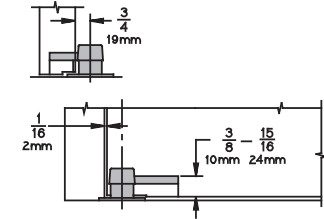
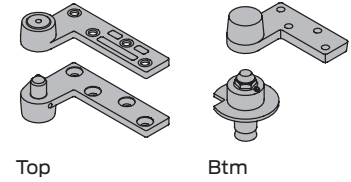
Hinges and pivots

Offset pivots

7222

3/4" Offset pivot, 200lb with top header mount and bottom base mount

- Maximum door load 200 pounds
- Recommended for use with 1 3/4" minimum door thickness, with 1/8" bevel in 2"
- Vertical adjustment range 3/16", with positive locking
- Handed LH or RH
- 7222 Set (7222 Top and 7222 Btm)
- 7222 Top (7212-7215-7222-7226-7227 Top), header mount
- 7222 Btm (7222 Btm), base plate mount



Specifications

Material substrate	Made from cast brass
Certifications	<ul style="list-style-type: none"> ▪ Meets ANSI/BHMA A156.4 C07162 ▪ UL10C Listed (20 min)

Available accessories

7222 INT (7212-7212V-7222) Intermediate pivot (handed) as needed

See general information for specifics on how many intermediate pivots are recommended.

7222 Finishes

BHMA	Description	Substrate	Finish
605	Bright brass	Brass	US3
606	Satin brass	Brass	US4
612	Satin bronze	Brass	US10
613	Oil rubbed bronze	Brass	US10B
619	Satin nickel	Brass	US15
622	Matte black	Brass	BLK
625	Bright chrome	Brass	625
626	Satin chrome	Brass	626
-	Aged bronze	Brass	643e/716
689	Aluminum painted	Brass	SP28
691	Bronze painted	Brass	SP10
695	Dark bronze painted	Brass	SP313/US10BE
706	Brass painted	Brass	SP4

For other colors, consult factory.

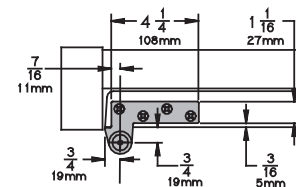
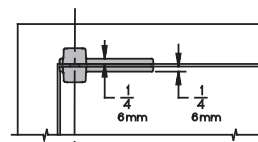
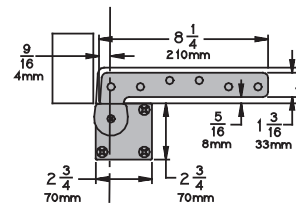
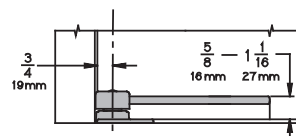
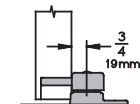
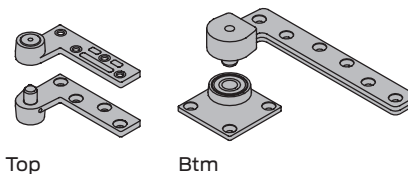
Hinges and pivots

Offset pivots

7226 / 7226F

3/4" Offset pivot, 600lb with top header mount and bottom base mount (fire and non-fire rated models)

- Maximum door load 600 pounds
- Recommended for use with 1 3/4" minimum door thickness, with 1/8" bevel in 2"
- Vertical adjustment range 3/16", with positive locking
- Non-handed
- 7226 Set (7226 Top and 7226 Btm)
- 7226 Top (7212-7215-7222-7226-7227 Top), header mount
- 7226 Btm (7226 Btm), base plate mount
- 7226F Set (7226F Top and 7226F Btm), fire rated
- 7226F Top (7215F-7226F-7227F Top), header mount, fire rated
- 7226F Btm (7226F Btm), base plate mount, fire rated



Specifications

Material substrate	<ul style="list-style-type: none"> ▪ 7226 - Made from cast brass ▪ 7226F - Made from 304 series stainless steel
Certifications	<ul style="list-style-type: none"> ▪ Meets ANSI/BHMA A156.4 C07162 ▪ 7226 - UL10C Listed (20 min) ▪ 7226F - UL10C Listed (3 hour)

Available accessories

7226 INT	(7215-7226-7227) Intermediate pivot (handed) as needed
7226F INT	(7215F-7226F-7227F) Intermediate pivot (handed) as needed
7226PT INT or 7226FPT INT	(7215-7226-7227 PT INT) or (7215F-7226F-7227F PT INT) power transfer intermediate pivot (handed) for electrical applications; for additional wiring applications, consult product support

See general information for specifics on how many intermediate pivots are recommended.

7226 Finishes

BHMA	Description	Substrate	Finish
605	Bright Brass	Brass	US3
606	Satin Brass	Brass	US4
612	Satin Bronze	Brass	US10
613	Oil Rubbed Bronze	Brass	US10B
619	Satin Nickel	Brass	US15
622	Matte Black	Brass	BLK
625	Bright Chrome	Brass	625
626	Satin Chrome	Brass	626
-	Aged Bronze	Brass	643e/716
689	Aluminum Painted	Brass	SP28
691	Bronze Painted	Brass	SP10
695	Dark Bronze Painted	Brass	SP313/US10BE
706	Brass Painted	Brass	SP4

7226F Finishes

BHMA	Description	Substrate	Finish
629	Bright Stainless	Stainless steel	US32
630	Satin Stainless	Stainless steel	US32D
631	Matte Black	Stainless steel	BLK
632	Bright Brass	Stainless steel	US3
639	Satin Bronze	Stainless steel	US10
-	Aged Bronze	Stainless steel	643e/716
689	Aluminum Painted	Stainless steel	SP28
691	Bronze Painted	Stainless steel	SP10
695	Dark Bronze Painted	Stainless steel	SP313/US10BE
706	Brass Painted	Stainless steel	SP4

For other colors, consult factory.

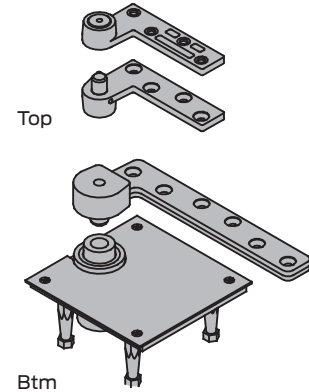
Hinges and pivots

Offset pivots

7227 / 7227F

3/4" Offset pivot, 700lb with top header mount and bottom base mount (fire and non-fire rated models)

- Maximum door load 700 pounds
- Recommended for use with 1 3/4" minimum door thickness, with 1/8" bevel in 2"
- Vertical adjustment range 3/16", with positive locking
- Non-handed
- 7227 Set (7227 Top and 7227 Btm)
- 7227 Top (7212-7215-7222-7226-7227 Top), header mount
- 7227 Btm (7227 Btm), base plate mount
- 7227F Set (7227F Top and 7227F Btm), fire rated
- 7227F Top (7215F-7226F-7227F Top), header mount, fire rated
- 7227F Btm (7227F Btm), base plate mount, fire rated



Specifications

Material substrate	<ul style="list-style-type: none"> 7227 - Made from cast brass 7227F - Made from 304 series stainless steel
Certifications	<ul style="list-style-type: none"> Meets ANSI/BHMA A156.4 C07121 7227 - UL10C Listed (20 min) 7227F - UL10C Listed (3 hour)

Available accessories

7227 INT	(7215-7226-7227) Intermediate pivot (handed) as needed
7227F INT	(7215F-7226F-7227F) Intermediate pivot (handed) as needed
7227PT INT or 7227FPT INT	(7215-7226-7227 PT INT) or (7215F-7226F-7227F PT INT) power transfer intermediate pivot (handed) for electrical applications; for additional wiring applications, consult product support

See general information for specifics on how many intermediate pivots are recommended.

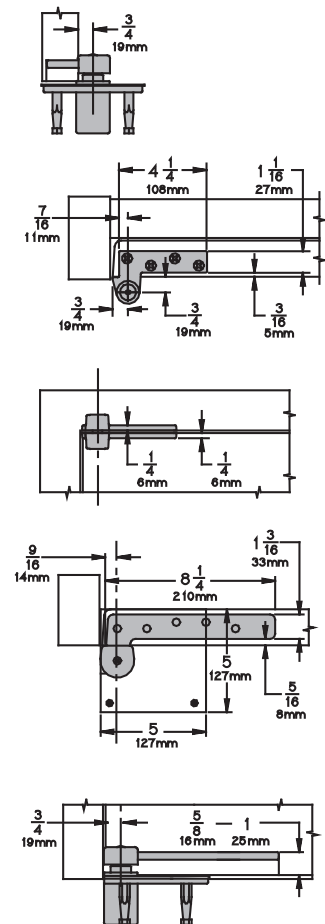
7227 Finishes

BHMA	Description	Substrate	Finish
605	Bright brass	Brass	US3
606	Satin brass	Brass	US4
612	Satin bronze	Brass	US10
613	Oil rubbed bronze	Brass	US10B
619	Satin nickel	Brass	US15
622	Matte black	Brass	BLK
625	Bright chrome	Brass	625
626	Satin chrome	Brass	626
-	Aged bronze	Brass	643e/716
689	Aluminum painted	Brass	SP28
691	Bronze painted	Brass	SP10
695	Dark bronze painted	Brass	SP313/US10BE
706	Brass painted	Brass	SP4

7227F Finishes

BHMA	Description	Substrate	Finish
629	Bright stainless	Stainless steel	US32
630	Satin stainless	Stainless steel	US32D
631	Matte black	Stainless steel	BLK
632	Bright brass	Stainless steel	US3
639	Satin bronze	Stainless steel	US10
-	Aged bronze	Stainless steel	643e/716
689	Aluminum painted	Stainless steel	SP28
691	Bronze painted	Stainless steel	SP10
695	Dark bronze painted	Stainless steel	SP313/US10BE
706	Brass painted	Stainless steel	SP4

For other colors, consult factory.



Hinges and pivots

Offset pivots

7230F

3/4" Offset pivot, 1000lb with top header mount and bottom base mount (fire rated)

- Maximum door load 1000 pounds
- Recommended for use with 1 3/4" minimum door thickness, with 1/8" bevel in 2"
- Vertical adjustment range 3/16", with positive locking
- Non-handed
- 7230F Set (7230F Top and 7230F Btm)
- 7230F Top (7230F-7237F Top), header mount
- 7230F Btm (7230F Btm), base plate mount

Specifications

Material substrate	Made from 304 series stainless steel
Certifications	<ul style="list-style-type: none"> ▪ Meets ANSI/BHMA A156.4 C07162 ▪ UL10C Listed (3 hour)

Available accessories

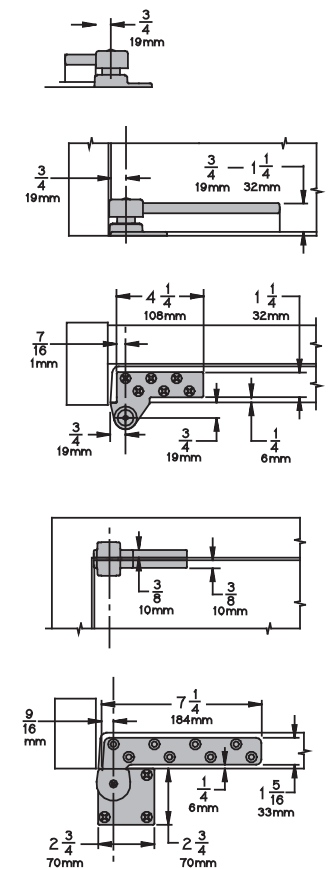
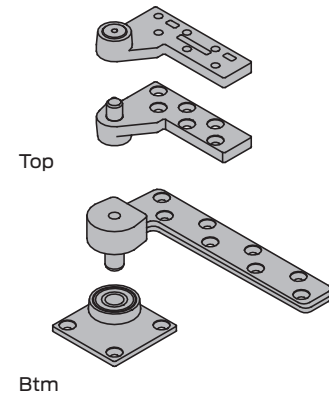
7230F INT	(7230F-7237F) Intermediate pivot (handed) as needed
7230FPT INT	(7230F-7237F PT INT) power transfer intermediate pivot for electrical applications; for additional wiring applications, consult product support

See general information for specifics on how many intermediate pivots are recommended.

7230F Finishes

BHMA	Description	Substrate	Finish
629	Bright stainless	Stainless steel	US32
630	Satin stainless	Stainless steel	US32D
631	Matte black	Stainless steel	BLK
632	Bright brass	Stainless steel	US3
639	Satin bronze	Stainless steel	US10
-	Aged bronze	Stainless steel	643e/716
689	Aluminum painted	Stainless steel	SP28
691	Bronze painted	Stainless steel	SP10
695	Dark bronze painted	Stainless steel	SP313/US10BE
706	Brass painted	Stainless steel	SP4

For other colors, consult factory.



Hinges and pivots

Offset pivots

7237F

3/4" Offset pivot, 1750lb with top header mount and bottom base mount (fire rated)

- Maximum door load 1750 pounds
- Recommended for use with 1 3/4" minimum door thickness, with 1/8" bevel in 2"
- Vertical adjustment range 3/16", with positive locking
- Non-handed
- 7237F Set (7237F Top and 7237F Btm)
- 7237F Top (7230F-7237F Top), header mount
- 7237F Btm (7237F Btm), mortised cement case mount

Specifications

Material substrate	Made from 304 series stainless steel
Certifications	<ul style="list-style-type: none"> ▪ Meets ANSI/BHMA A156.4 C07111 ▪ UL10C Listed (3 hour)

Available accessories

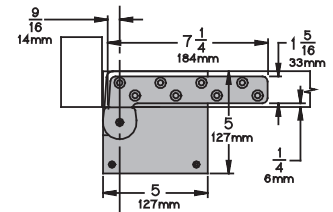
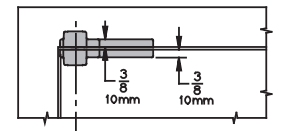
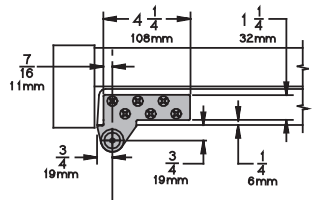
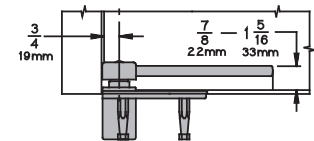
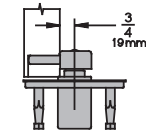
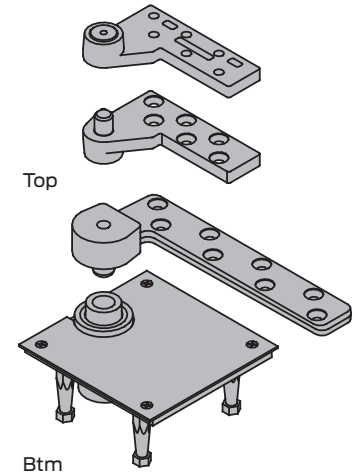
7237F INT	(7230F-7237F) Intermediate pivot (handed) as needed
7237FPT INT	(7230F-7237F PT INT) power transfer intermediate pivot for electrical applications; for additional wiring applications, consult product support

See general information for specifics on how many intermediate pivots are recommended.

7237F Finishes

BHMA	Description	Substrate	Finish
629	Bright stainless	Stainless steel	US32
630	Satin stainless	Stainless steel	US32D
631	Matte black	Stainless steel	BLK
632	Bright brass	Stainless steel	US3
639	Satin bronze	Stainless steel	US10
-	Aged bronze	Stainless steel	643e/716
689	Aluminum painted	Stainless steel	SP28
691	Bronze painted	Stainless steel	SP10
695	Dark bronze painted	Stainless steel	SP313/US10BE
706	Brass painted	Stainless steel	SP4

For other colors, consult factory.



Hinges and pivots

Offset pivots

7244F

1 1/2" Offset pivot, 400lb with top header mount and bottom base mount (fire rated)

- Maximum door load 400 pounds
- Recommended for use with 1 3/4" minimum door thickness, with 1/8" bevel in 2"
- Vertical adjustment range 3/16", with positive locking
- Non-handed
- 7244F Set (7244F Top and 7244F Btm)
- 7244F Top (7244F-7245F Top), header mount
- 7244F Btm (7244F Btm), base mount

Specifications

Material substrate	Made from 304 series stainless steel
Certifications	<ul style="list-style-type: none"> ▪ Meets ANSI/BHMA A156.4 C07162 ▪ UL10C Listed (3 hour)

Available accessories

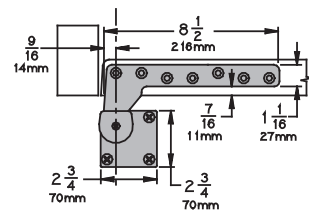
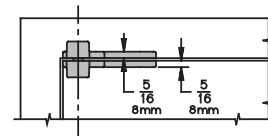
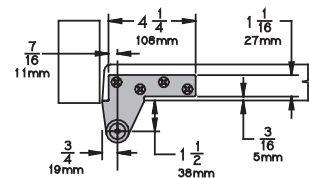
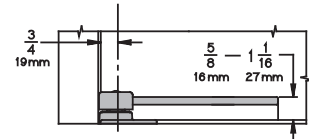
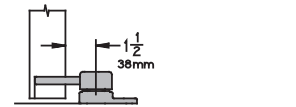
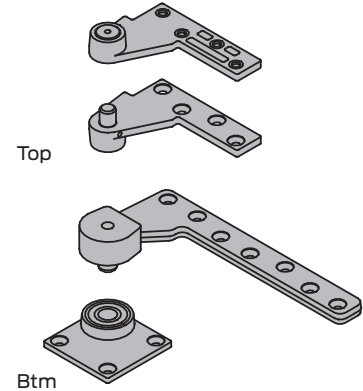
7244F INT (7244F-7245F) Intermediate pivot (handed) as needed; for additional electrical wiring applications, consult product support

See general information for specifics on how many intermediate pivots are recommended.

7244F Finishes

BHMA	Description	Substrate	Finish
629	Bright stainless	Stainless steel	US32
630	Satin stainless	Stainless steel	US32D
631	Matte black	Stainless steel	BLK
632	Bright brass	Stainless steel	US3
639	Satin bronze	Stainless steel	US10
–	Aged bronze	Stainless steel	643e/716
689	Aluminum painted	Stainless steel	SP28
691	Bronze painted	Stainless steel	SP10
695	Dark bronze painted	Stainless steel	SP313/US10BE
706	Brass painted	Stainless steel	SP4

For other colors, consult factory.



Hinges and pivots

Offset pivots

7245F

1 1/2" Offset pivot, 500lb with top header mount and bottom base mount (fire rated)

- Maximum door load 500 pounds
- Recommended for use with 1 3/4" minimum door thickness, with 1/8" bevel in 2"
- Vertical adjustment range 3/16", with positive locking
- Non-handed
- 7245F Set (7245F Top and 7245F Btm)
- 7245F Top (7244F-7245F Top), header mount
- 7245F Btm (7245F Btm), mortised cement case mount

Specifications

Material substrate	Made from 304 series stainless steel
Certifications	<ul style="list-style-type: none"> ▪ Meets ANSI/BHMA A156.4 C07121 ▪ UL10C Listed (3 hour)

Available accessories

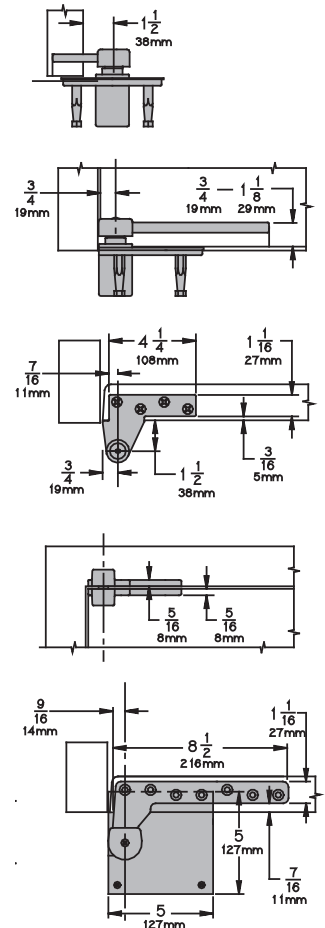
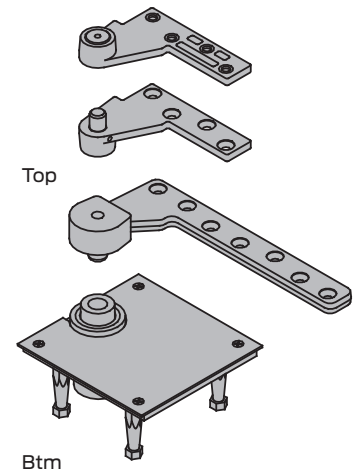
7245F INT (7244F-7245F) Intermediate pivot (handed) as needed; for additional electrical wiring applications, consult product support

See general information for specifics on how many intermediate pivots are recommended.

7245F Finishes

BHMA	Description	Substrate	Finish
629	Bright stainless	Stainless steel	US32
630	Satin stainless	Stainless steel	US32D
631	Matte black	Stainless steel	BLK
632	Bright brass	Stainless steel	US3
639	Satin bronze	Stainless steel	US10
-	Aged bronze	Stainless steel	643e/716
689	Aluminum painted	Stainless steel	SP28
691	Bronze painted	Stainless steel	SP10
695	Dark bronze painted	Stainless steel	SP313/US10BE
706	Brass painted	Stainless steel	SP4

For other colors, consult factory.



Hinges and pivots

Intermediate pivots

7212-7212V-7222 INT

3/4" Offset intermediate pivot

NFPA 80, Section 3-3.8 requires intermediate pivot on some fire door applications, consult product support. Use for door heights over 7'0" and one every 2'6" as needed.

- This intermediate pivot is used with 7212, 7212V, and 7222 offset pivots
- Use for door weight over the pivot set limit. Use one additional pivot for every additional 100 pounds.
- Recommended for use with 1 3/4" minimum door thickness, with 1/8" bevel in 2"
- Handed LH or RH

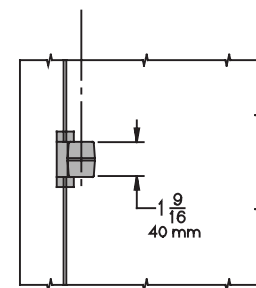
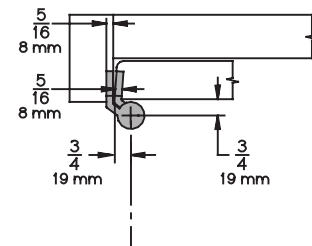
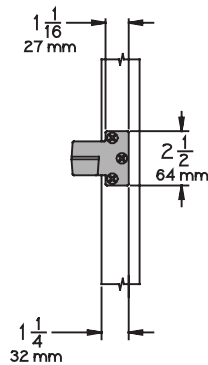
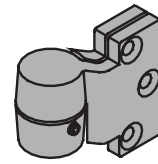
Specifications

Material substrate	Made from cast brass
Certifications	<ul style="list-style-type: none"> ▪ Meets ANSI/BHMA A156.4 C07382 ▪ UL10C Listed (3 hour)

7212-7212V-7222 INT Finishes

BHMA	Description	Substrate	Finish
605	Bright brass	Brass	US3
606	Satin brass	Brass	US4
612	Satin bronze	Brass	US10
613	Oil rubbed bronze	Brass	US10B
619	Satin nickel	Brass	US15
622	Matte black	Brass	BLK
625	Bright chrome	Brass	625
626	Satin chrome	Brass	626
-	Aged bronze	Brass	643e/716
689	Aluminum painted	Brass	SP28
691	Bronze painted	Brass	SP10
695	Dark bronze painted	Brass	SP313/US10BE
706	Brass painted	Brass	SP4

For other colors, consult factory.

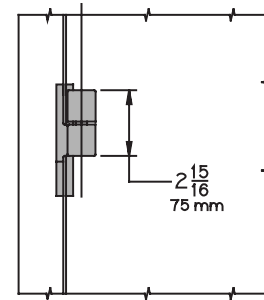
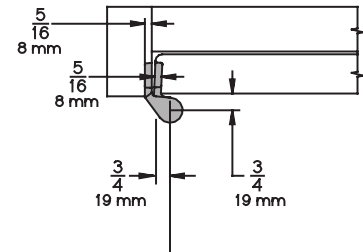
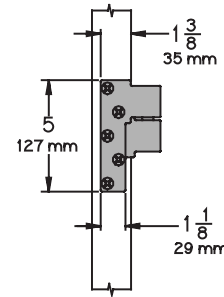
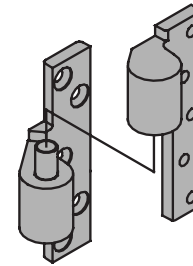


7215-7226-7227 INT / 7215F-7226F-7227F INT

3/4" Offset intermediate pivot (fire and non-fire rated models)

NFPA 80, Section 3-3.8 requires intermediate pivot on some fire door applications, consult product support. Use for door heights over 7'0" and one every 2'6" as needed.

- 7215-7226-7227 intermediate pivot is used with 7215, 7226, and 7227 offset pivots
- 7215F-7226F-7227F intermediate pivot is used with 7215F, 7226F, and 7227F offset pivots; fire rated
- Use for door weight over the pivot set limit. Use one additional pivot for every additional 100 pounds
- Recommended for use with 1 3/4" minimum door thickness, with 1/8" bevel in 2"
- Handed LH or RH



Specifications

Material substrate	<ul style="list-style-type: none"> 7215-7226-7227 - Made from cast brass 7215F-7226F-7227F - Made from 304 series stainless steel
Certifications	<ul style="list-style-type: none"> 7215-7226-7227 - Meets ANSI/BHMA A156.4 C07321 7215-7226-7227 - UL10C Listed (20 min) 7215F-7226F-7227F - Meets ANSI/BHMA A156.4 C07371 7215F-7226F-7227F - UL10C Listed (3 hour)

7215-7226-7227 INT Finishes

BHMA	Description	Substrate	Finish
605	Bright brass	Brass	US3
606	Satin brass	Brass	US4
612	Satin bronze	Brass	US10
613	Oil rubbed bronze	Brass	US10B
619	Satin nickel	Brass	US15
622	Matte black	Brass	BLK
625	Bright chrome	Brass	625
626	Satin chrome	Brass	626
-	Aged bronze	Brass	643e/716
689	Aluminum painted	Brass	SP28
691	Bronze painted	Brass	SP10
695	Dark bronze painted	Brass	SP313/US10BE
706	Brass painted	Brass	SP4

7215F-7226F-7227F INT Finishes

BHMA	Description	Substrate	Finish
629	Bright stainless	Stainless steel	US32
630	Satin stainless	Stainless steel	US32D
631	Matte black	Stainless steel	BLK
632	Bright brass	Stainless steel	US3
639	Satin bronze	Stainless steel	US10
-	Aged bronze	Stainless steel	643e/716
689	Aluminum painted	Stainless steel	SP28
691	Bronze painted	Stainless steel	SP10
695	Dark bronze painted	Stainless steel	SP313/US10BE
706	Brass painted	Stainless steel	SP4

For other colors, consult factory.

Hinges and pivots

Intermediate pivots

7230F-7237F INT

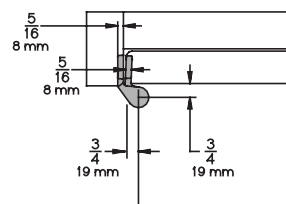
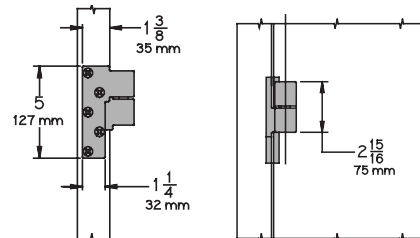
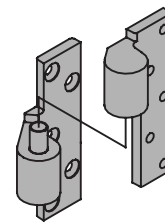
3/4" Offset intermediate pivot, fire rated

NFPA 80, Section 3-3.8 requires intermediate pivot on some fire door applications, consult product support. Use for door heights over 7'0" and one every 2'6" as needed.

- This intermediate pivot is used with 7230F and 7237F offset pivots
- Use for door weight over the pivot set limit. Use one additional pivot for every additional 100 pounds
- Recommended for use with 1 3/4" minimum door thickness, with 1/8" bevel in 2"
- Handed LH or RH

Specifications

Material substrate	Made from 304 series stainless steel
Certifications	<ul style="list-style-type: none"> ▪ Meets ANSI/BHMA A156.4 C07311 ▪ UL10C Listed (3 hour)



7244F-7245F INT

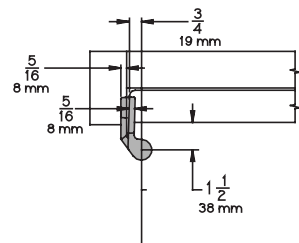
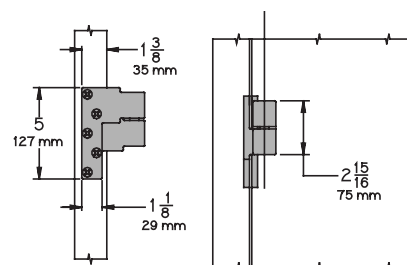
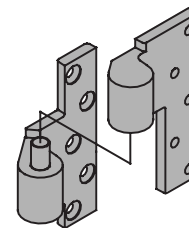
1 1/2" Offset intermediate pivot, fire rated

NFPA 80, Section 3-3.8 requires intermediate pivot on some fire door applications, consult product support. Use for door heights over 7'0" and one every 2'6" as needed.

- This intermediate pivot is used with 7244F and 7245F offset pivots
- Use for door weight over the pivot set limit, use one additional pivot for every additional 100 pounds.
- Recommended for use with 1 3/4" minimum door thickness, with 1/8" bevel in 2"
- Handed LH or RH

Specifications

Material substrate	Made from 304 series stainless steel
Certifications	<ul style="list-style-type: none"> ▪ Meets ANSI/BHMA A156.4 C07371 ▪ UL10C Listed (3 hour)



7230F-7237F INT and 7244F-7245F INT Finishes

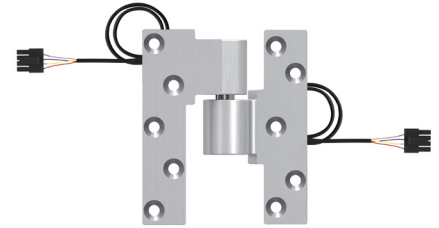
BHMA	Description	Substrate	Finish
629	Bright stainless	Stainless steel	US32
630	Satin stainless	Stainless steel	US32D
631	Matte black	Stainless steel	BLK
632	Bright brass	Stainless steel	US3
639	Satin bronze	Stainless steel	US10
-	Aged bronze	Stainless steel	643e/716
689	Aluminum painted	Stainless steel	SP28
691	Bronze painted	Stainless steel	SP10
695	Dark bronze painted	Stainless steel	SP313/US10BE
706	Brass painted	Stainless steel	SP4

For other colors, consult factory.

7215PT-7226PT-7227PT INT / 7215FPT-7226FPT-7227FPT INT

3/4" Offset power transfer intermediate pivot (fire and non-fire rated models)

- 7215PT-7226PT-7227PT intermediate pivot is used with 7215, 7226, and 7227 offset pivots
- 7215FPT-7226FPT-7227FPT intermediate pivot is used with 7215F, 7226F, 7227F offset pivots; fire rated
- Non-load bearing
- Available in 28 gauge TW4 or TW8. For additional electrical wiring applications, consult product support.
- Rated 50 VDC or VAC @ 3.5 amps. Continuous or 16 amp pulse, maximum pulse 400 milliseconds
- Recommended for use with 1 3/4" minimum door thickness, with 1/8" bevel in 2"
- Handed LH or RH



Specifications

Material substrate	<ul style="list-style-type: none"> 7215PT-7226PT-7227PT - Offered in brass substrate 7215FPT-7226FPT-7227FPT - Offered in stainless steel
Certifications	<ul style="list-style-type: none"> 7215PT-7226PT-7227PT - UL10C Listed (20 min) 7215FPT-7226FPT-7227FPT - UL10C Listed (3 hour) Meets UL 634 7215PT-7226PT-7227PT - UL10C Listed (20 min) 7215FPT-7226FPT-7227FPT - UL10C Listed (3 hour) Meets UL 634

7215PT-7226PT-7227PT INT Finishes

BHMA	Description	Substrate	Finish
605	Bright brass	Brass	US3
606	Satin brass	Brass	US4
612	Satin bronze	Brass	US10
613	Oil rubbed bronze	Brass	US10B
619	Satin nickel	Brass	US15
622	Matte black	Brass	BLK
625	Bright chrome	Brass	625
626	Satin chrome	Brass	626
-	Aged bronze	Brass	643e/716
689	Aluminum painted	Brass	SP28
691	Bronze painted	Brass	SP10
695	Dark bronze painted	Brass	SP313/US10BE
706	Brass painted	Brass	SP4

For other colors, consult factory.

7215FPT-7226FPT-7227FPT INT Finishes

BHMA	Description	Substrate	Finish
629	Polished stainless steel	Steel	US32
630	Satin stainless steel	Steel	US32D
631	Matte black	Steel	F-BLK
632	Bright brass	Steel	US3
639	Satin bronze plated	Steel	US10
-	Aged bronze	Steel	643e/716
689	Aluminum painted	Steel	SP28
691	Bronze painted	Steel	SP10
695	Dark bronze painted	Steel	SP313/US10BE
706	Brass painted	Steel	SP4

For other colors, consult factory.

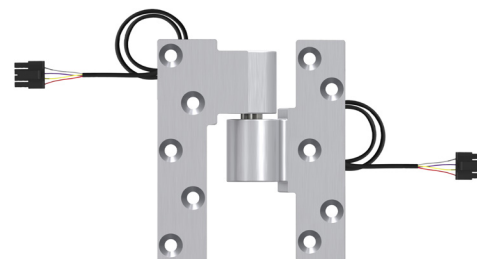
Hinges and pivots

Intermediate pivots

7230FPT - 7237FPT INT

3/4" Offset power transfer intermediate pivot (fire rated)

- 7230FPT-7237FPT INT $\frac{3}{4}$ " fire rated intermediate pivot is used with 7230F, 7237F offset pivots
- Non-load bearing
- Available in with 28 gauge TW4 or TW8 (for additional electrical wiring applications, consult product support)
- Rated 50 VDC or VAC @ 3.5 amps; Continuous or 16 amp pulse, maximum pulse 400 milliseconds
- Recommended for use with $1\frac{3}{4}$ " minimum door thickness, with $\frac{1}{8}$ " bevel in 2"
- Handed LH or RH



Specifications

Material substrate	Offered in stainless steel
Certifications	<ul style="list-style-type: none"> ▪ UL10C Listed (3 hour) ▪ Meets UL 634

7230FPT - 7237FPT INT Finishes

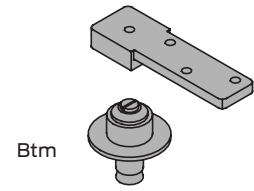
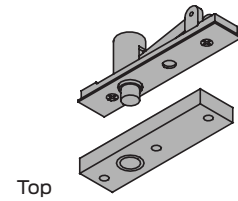
BHMA	Description	Substrate	Finish
629	Polished stainless steel	Steel	US32
630	Satin stainless steel	Steel	US32D
631	Matte black	Steel	F-BLK
632	Bright brass	Steel	US3
639	Satin bronze plated	Steel	US10
-	Aged bronze	Steel	643e
689	Aluminum painted	Steel	SP28
691	Bronze painted	Steel	SP10
695	Dark bronze painted	Steel	SP313/US10BE
706	Brass painted	Steel	SP4

For other colors, consult factory.

7253

Center hung pivot, 300lb with bottom base mount

- Maximum door load 300 pounds
- Recommended for use with 1 3/4" minimum door thickness
- Not recommended for doors larger than 4'0" X 8'0"
- Easy installation, tilt on bearing and bearing pin
- Adjustable floor to door clearance 3/16" to 3/4", consult product support if greater than 3/4"
- Vertical adjustment range 3/16", with positive locking
- Non-handed
- 7253 Set (7253 Top and 7253 Btm)
- 7253 Top (7253-7255-7255J-7256 Top), header mount
- 7253 Btm (7253 Btm), base plate mount



Specifications

Material substrate	Made from cast brass
Certifications	Meets ANSI/BHMA A156.4 C07032
Dimensions	<ul style="list-style-type: none"> Radius stop (A) to clear heel of door edge. Pivot distance (B) 1 3/4" (44mm) minimum from jamb to centerline of pivot pin. Radius heel edge of door, 1 5/8" (41mm) minimum recommended. Clearance from bottom edge of door to floor mounting surface is adjustable from 3/16" (5mm) to 3/4" (19mm) by varying the depth of the mortise (C) in the bottom of the door, refer to Chart D. Consult product support when clearance is over 3/4" (19mm).

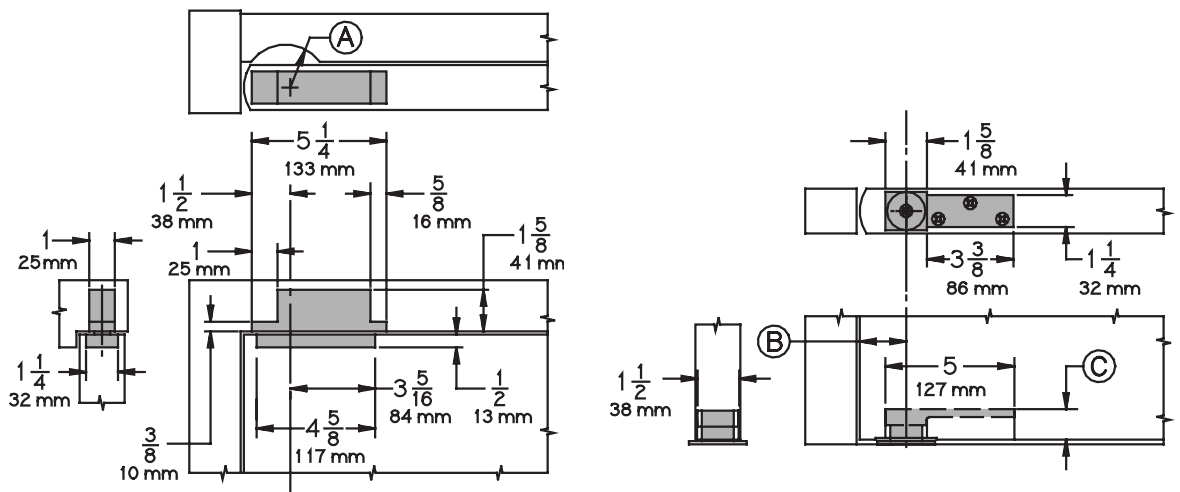
7253 Finishes

BHMA	Description	Substrate	Finish
605	Bright brass	Brass	US3
606	Satin brass	Brass	US4
612	Satin bronze	Brass	US10
613	Oil rubbed bronze	Brass	US10B
619	Satin nickel	Brass	US15
622	Matte black	Brass	BLK
625	Bright chrome	Brass	625
626	Satin chrome	Brass	626
-	Aged bronze	Brass	643e/716
689	Aluminum painted	Brass	SP28
691	Bronze painted	Brass	SP10
695	Dark bronze painted	Brass	SP313/US10BE
706	Brass painted	Brass	SP4

For other colors, consult factory.

Table D

Clearance depth of mortise	
3/16" (5mm)	1 3/16" (30mm)
3/8" (10mm)	1" (25mm)
1/2" (13mm)	7/8" (22mm)
5/8" (16mm)	3/4" (19mm)
3/4" (19mm)	5/8" (16mm)



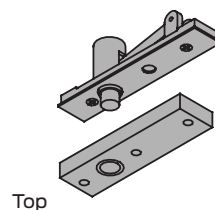
Hinges and pivots

Center hung pivots

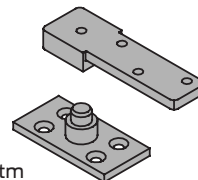
7255

Center hung pivot, 500lb with bottom base mount

- Maximum door load 500 pounds
- Recommended for use with $1\frac{3}{4}$ " minimum door thickness
- Not recommended for doors larger than 4'0" X 8'0"
- Easy installation, tilt on bearing and bearing pin
- Adjustable floor to door clearance $\frac{3}{16}$ " to $\frac{3}{4}$ ", consult product support if greater than $\frac{3}{4}$ "
- Vertical adjustment range $\frac{3}{16}$ ", with positive locking
- Non-handed
- 7255 Set (7255 Top and 7255 Btm)
- 7255 Top (7253-7255-7255J-7256 Top), header mount
- 7255 Btm (7255 Btm), base plate mount



Top



Btm

Specifications

Material substrate	Made from cast brass
Certifications	Meets ANSI/BHMA A156.4 C07032
Dimensions	<ul style="list-style-type: none"> ▪ Radius stop (A) to clear heel of door edge ▪ Pivot distance (B) $1\frac{3}{4}$" (44mm) minimum from jamb to centerline of pivot pin. Radius heel edge of door, $1\frac{5}{8}$" (41mm) minimum recommended. ▪ Clearance from bottom edge of door to floor mounting surface is adjustable from $\frac{3}{16}$" (5mm) to $\frac{3}{4}$" (19mm) by varying the depth of the mortise (C) in the bottom of the door, refer to Chart D. Consult product support when clearance is over $\frac{3}{4}$" (19mm).

7255 Finishes

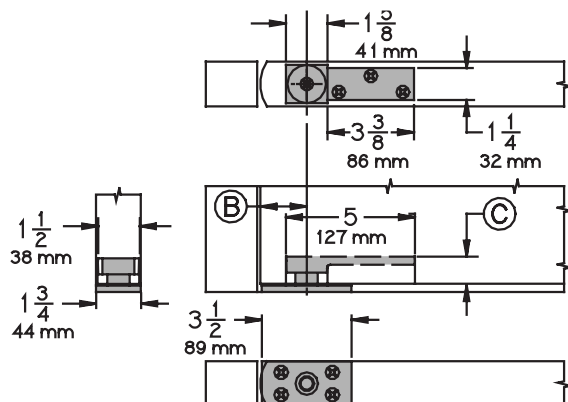
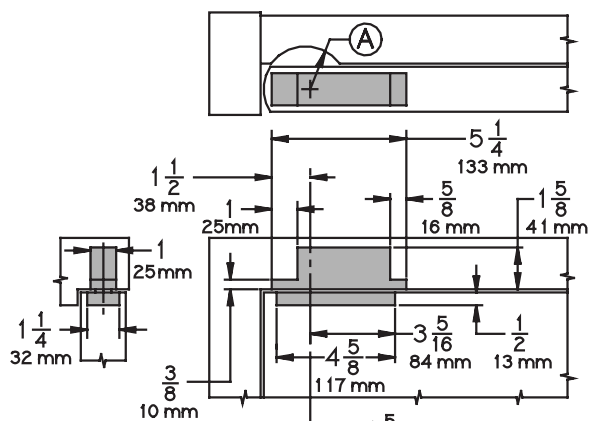
BHMA	Description	Substrate	Finish
605	Bright brass	Brass	US3
606	Satin brass	Brass	US4
612	Satin bronze	Brass	US10
613	Oil rubbed bronze	Brass	US10B
619	Satin nickel	Brass	US15
622	Matte black	Brass	BLK
625	Bright chrome	Brass	625
626	Satin chrome	Brass	626
–	Aged bronze	Brass	643e/716
689	Aluminum painted	Brass	SP28
691	Bronze painted	Brass	SP10
695	Dark bronze painted	Brass	SP313/US10BE
706	Brass painted	Brass	SP4

For other colors, consult factory.

Table D

Clearance depth of mortise

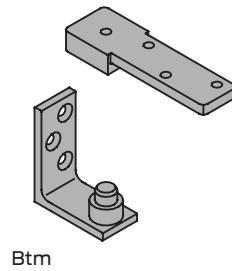
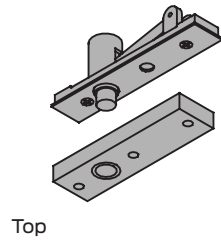
$\frac{3}{16}$ " (5mm)	$1\frac{3}{16}$ " (30mm)
$\frac{3}{8}$ " (10mm)	1" (25mm)
$\frac{1}{2}$ " (13mm)	$\frac{7}{8}$ " (22mm)
$\frac{5}{8}$ " (16mm)	$\frac{3}{4}$ " (19mm)
$\frac{3}{4}$ " (19mm)	$\frac{5}{8}$ " (16mm)



7255J

Center hung pivot, 500lb with bottom jamb mount

- Maximum door load 500 pounds
- Recommended for use with 1 3/4" minimum door thickness
- Not recommended for doors larger than 4'0" X 8'0"
- Easy installation, tilt on bearing and bearing pin
- Adjustable floor to door clearance 3/16" to 3/4", consult product support if greater than 3/4"
- Vertical adjustment range 3/16", with positive locking
- Non-handed
- 7255J Set (7255J Top and 7255J Btm)
- 7255J Top (7253-7255-7255J-7256 Top), header mount
- 7255J Btm (7255J Btm), jamb mount



Specifications

Material substrate	Made from cast brass
Certifications	Meets ANSI/BHMA A156.4 C07042
Dimensions	<ul style="list-style-type: none"> Radius stop (A) to clear heel of door edge. Pivot distance (B) 1 3/4" (44mm) minimum from jamb to centerline of pivot pin. Radius heel edge of door, 1 5/8" (41mm) minimum recommended. Clearance from bottom edge of door to floor mounting surface is adjustable from 3/16" (5mm) to 3/4" (19mm) by varying the depth of the mortise (C) in the bottom of the door, refer to Chart D. Consult product support when clearance is over 3/4" (19mm).

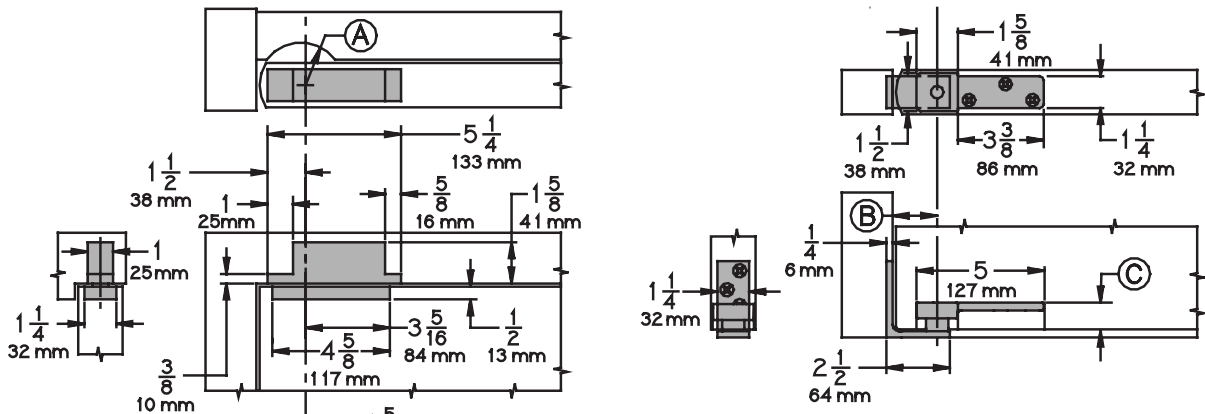
7255 Finishes

BHMA	Description	Substrate	Finish
605	Bright brass	Brass	US3
606	Satin brass	Brass	US4
612	Satin bronze	Brass	US10
613	Oil rubbed bronze	Brass	US10B
619	Satin nickel	Brass	US15
622	Matte black	Brass	BLK
625	Bright chrome	Brass	625
626	Satin chrome	Brass	626
-	Aged bronze	Brass	643e/716
689	Aluminum painted	Brass	SP28
691	Bronze painted	Brass	SP10
695	Dark bronze painted	Brass	SP313/US10BE
706	Brass painted	Brass	SP4

For other colors, consult factory.

Table D

Clearance depth of mortise	
3/16" (5mm)	1 3/16" (30mm)
3/8" (10mm)	1" (25mm)
1/2" (13mm)	7/8" (22mm)
5/8" (16mm)	3/4" (19mm)
3/4" (19mm)	5/8" (16mm)



Introduction
Table of contents
Hinges and pivots
Pulls, push bars and plates
Flush bolts, strikes and coordinators
Latches, catches and bolts
Door stops, holders and silencers
Exterior hardware
Miscellaneous hardware

Hinges and pivots

Center hung pivots

7256

Center hung pivot, 600lb with bottom base mount

- Maximum door load 600 pounds
- Recommended for use with 1³/₄" minimum door thickness
- Not recommended for doors larger than 4'0" X 8'0"
- Easy installation, tilt on bearing and bearing pin
- Adjustable floor to door clearance ³/₁₆" to ³/₄", consult product support if greater than ³/₄"
- Vertical adjustment range ³/₁₆", with positive locking
- Non-handed
- 7256 Set (7256 Top and 7256 Btm)
- 7256 Top (7253-7255-7255J-7256 Top), header mount
- 7256 Btm (7256 Btm), base plate mount

Specifications

Material substrate	Made from cast brass
Certifications	Meets ANSI/BHMA A156.4 C07021
Dimensions	<ul style="list-style-type: none"> ▪ Radius stop (A) to clear heel of door edge. ▪ Pivot distance (B) 1³/₄" (44mm) minimum from jamb to centerline of pivot pin. Radius heel edge of door, 1⁵/₈" (41mm) minimum recommended. ▪ Clearance from bottom edge of door to floor mounting surface is adjustable from ³/₁₆" (5mm) to ³/₄" (19mm) by varying the depth of the mortise (C) in the bottom of the door, refer to Chart D. Consult product support when clearance is over ³/₄" (19mm).

7256 Finishes

BHMA	Description	Substrate	Finish
605	Bright brass	Brass	US3
606	Satin brass	Brass	US4
612	Satin bronze	Brass	US10
613	Oil rubbed bronze	Brass	US10B
619	Satin nickel	Brass	US15
622	Matte black	Brass	BLK
625	Bright chrome	Brass	625
626	Satin chrome	Brass	626
—	Aged bronze	Brass	643e/716
689	Aluminum painted	Brass	SP28
691	Bronze painted	Brass	SP10
695	Dark bronze painted	Brass	SP313/US10BE
706	Brass painted	Brass	SP4

For other colors, consult factory.

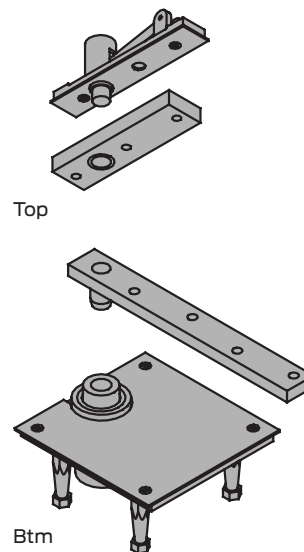
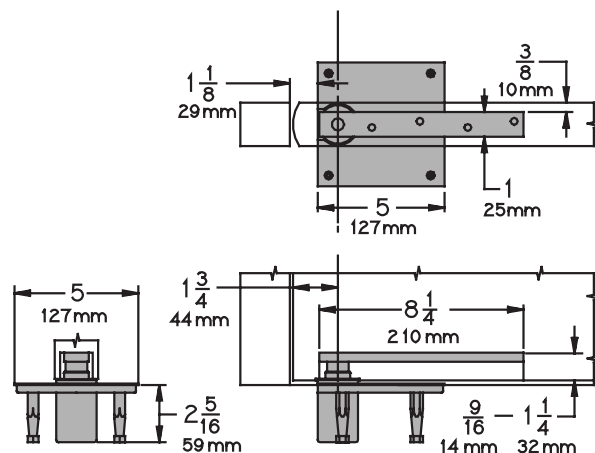
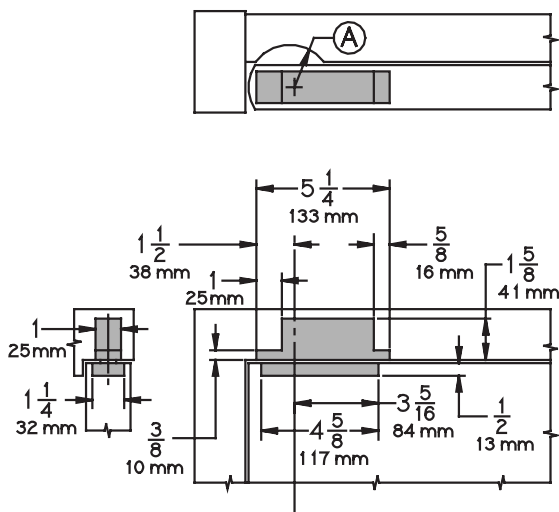


Table D

Clearance depth of mortise

³ / ₁₆ " (5mm)	1 ³ / ₁₆ " (30mm)
³ / ₈ " (10mm)	1" (25mm)
¹ / ₂ " (13mm)	⁷ / ₈ " (22mm)
⁵ / ₈ " (16mm)	³ / ₄ " (19mm)
³ / ₄ " (19mm)	⁵ / ₈ " (16mm)



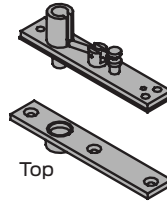
Hinges and pivots

Center hung pivots

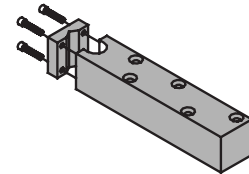
7259

Center hung pivot, 1000lb with bottom base mount

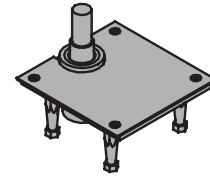
- Maximum door load 1000 pounds
- Recommended for use with 2" to 3" minimum door thickness, consult product support if doors are thicker than 3"
- Not recommended for doors larger than 4'0" X 8'0"
- Easy installation, tilt on bearing and bearing pin
- Adjustable floor to door clearance $\frac{3}{16}$ " to $\frac{3}{4}$ ", consult product support if greater than $\frac{3}{4}$ "
- Vertical adjustment range $\frac{3}{16}$ ", with positive locking
- Non-handed
- 7259 Set (7259 Top and 7259 Btm)
- 7259 Top (7259 Top) header mount
- 7259 Btm (7259 Btm), base frame mount



Top



Btm



Specifications

Material substrate	Made from cast brass
Certifications	Meets ANSI/BHMA A156.4 C07011
Dimensions	<ul style="list-style-type: none"> Radius stop (A) to clear heel of door edge. Pivot distance (B) $1\frac{3}{4}$" (44mm) minimum from jamb to centerline of pivot pin. Radius heel edge of door, $1\frac{5}{8}$" (41mm) minimum recommended. Clearance from bottom edge of door to floor mounting surface is adjustable from $\frac{3}{16}$" (5mm) to $\frac{3}{4}$" (19mm) by varying the depth of the mortise (C) in the bottom of the door, refer to Chart D. Consult product support when clearance is over $\frac{3}{4}$" (19mm).

7259 Finishes

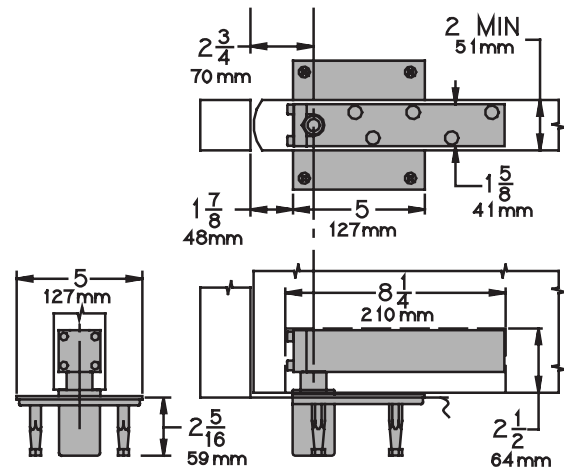
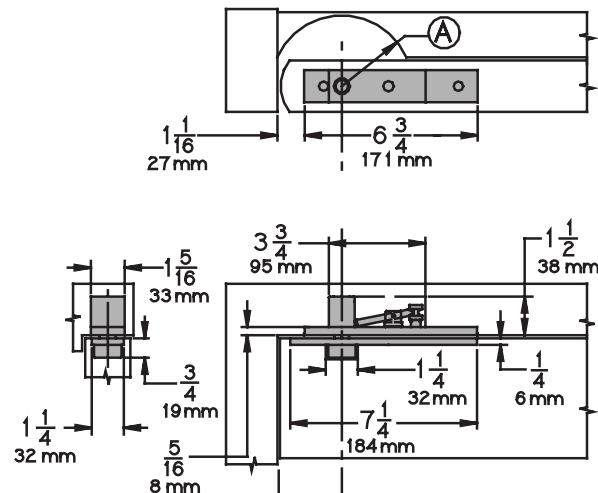
BHMA	Description	Substrate	Finish
605	Bright brass	Brass	US3
606	Satin brass	Brass	US4
612	Satin bronze	Brass	US10
613	Oil rubbed bronze	Brass	US10B
619	Satin nickel	Brass	US15
622	Matte black	Brass	BLK
625	Bright chrome	Brass	625
626	Satin chrome	Brass	626
-	Aged bronze	Brass	643e/716
689	Aluminum painted	Brass	SP28
691	Bronze painted	Brass	SP10
695	Dark bronze painted	Brass	SP313/US10BE
706	Brass painted	Brass	SP4

For other colors, consult factory.

Table D

Clearance depth of mortise

$\frac{3}{16}$ " (5mm)	$1\frac{3}{16}$ " (30mm)
$\frac{3}{8}$ " (10mm)	1" (25mm)
$\frac{1}{2}$ " (13mm)	$\frac{7}{8}$ " (22mm)
$\frac{5}{8}$ " (16mm)	$\frac{3}{4}$ " (19mm)
$\frac{3}{4}$ " (19mm)	$\frac{5}{8}$ " (16mm)



Hinges and pivots

Pocket pivots

91105F

Pocket pivot/hinge, fire rated

- Maximum door load of 90 pounds per pivot
- Use three pivots for doors 7'0" tall and one every 2'6" for taller doors as needed
- Full mortise
- Recommended for use with 1 ³/₄" door thickness only
- Not recommended for doors larger than 4'0" X 8'0"
- Not recommended for wood frames (must be used with steel frames for fire rating)
- Allows door to open a full 90°
- Non-handed

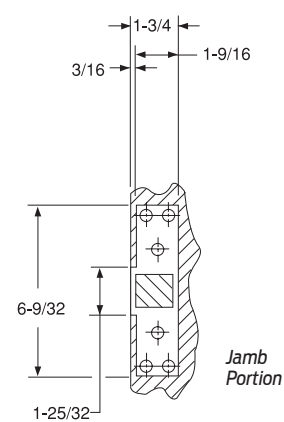
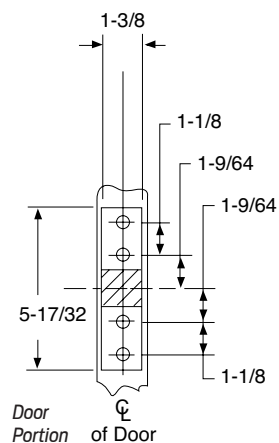
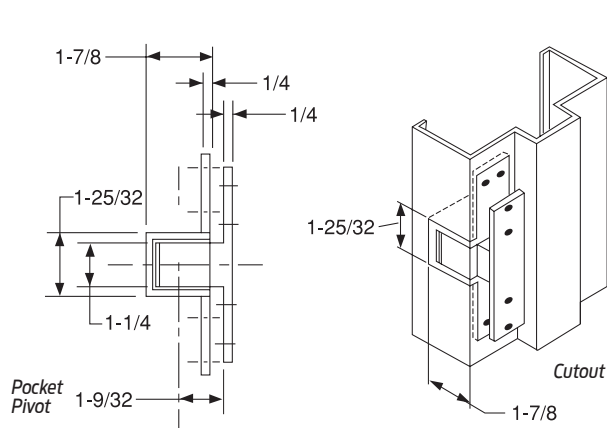
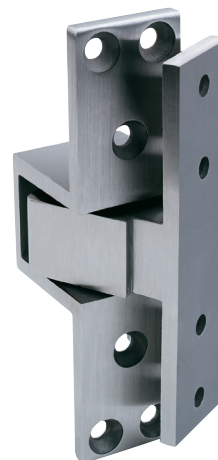
Specifications

Material substrate	Made from cast brass
Certifications	<ul style="list-style-type: none"> ▪ Meets ANSI/BHMA A156.4 C07611 ▪ UL 10C Listed (3 hour)

91105F Finishes

BHMA	Description	Substrate	Finish
600	Primer painted	Stainless steel	USP
629	Bright stainless	Stainless steel	US32
630	Satin stainless	Stainless steel	US32D
632	Bright brass	Stainless steel	US3
639	Satin bronze	Stainless steel	US10
640	Satin bronze	Stainless steel	US10
646	Satin nickel	Stainless steel	US15
—	Aged bronze	Stainless steel	643e/716
695	Dark bronze painted	Stainless steel	SP313/US10BE

For other colors, consult factory.



Hinges and pivots

Pocket pivots

E91105F

Pocket pivot/hinge, power transfer, fire rated

- Non-load bearing
- Available in 28 gauge TW4 or TW8 (for additional electrical wiring applications, consult product support)
- Rated 50 VDC or VAC @ 3.5 amps continuous or 16 amp pulse, maximum pulse 400 milliseconds
- Full mortise
- Recommended for use with 1³/₄" door thickness only
- Not recommended for doors larger than 4'0" X 8'0"
- Not recommended for wood frames
- Allows door to open a full 90°
- Non-handed
- Standard for Allegion Connect



Specifications

Material substrate	Made from 304 series stainless steel
Certifications	<ul style="list-style-type: none"> ▪ Meets ANSI/BHMA A156.4 C07611 ▪ UL10C Listed (3 hour)

E91105F Finishes

BHMA	Description	Substrate	Finish
600	Primer painted	Stainless steel	USP
629	Bright stainless	Stainless steel	US32
630	Satin stainless	Stainless steel	US32D
632	Bright brass	Stainless steel	US3
639	Satin bronze	Stainless steel	US10
-	Aged bronze	Stainless steel	643e/716
695	Dark bronze painted	Stainless steel	SP313/US10BE

For other colors, consult factory.

